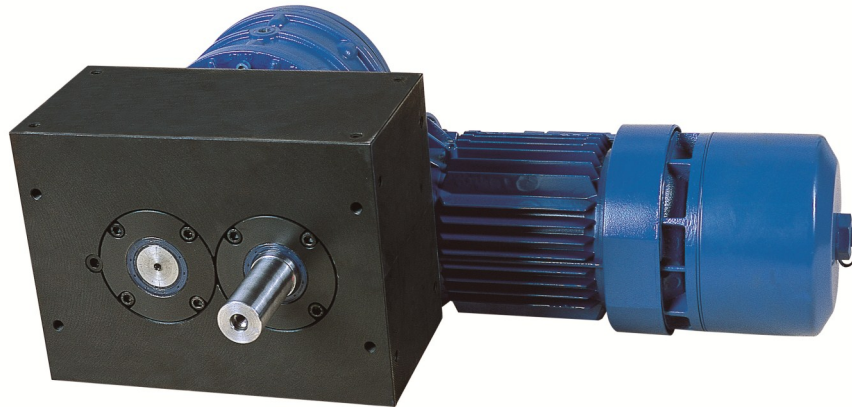




PE 65-105

Index units with parallel shafts



PE 65-105
Index units with parallel shafts

PE 65-105

Retailer contact details:

PE 65-105

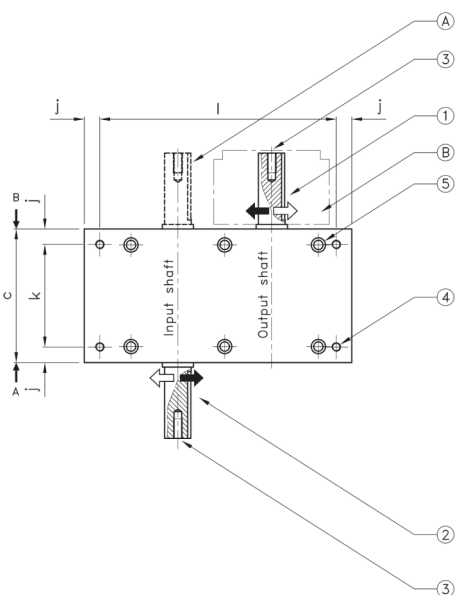
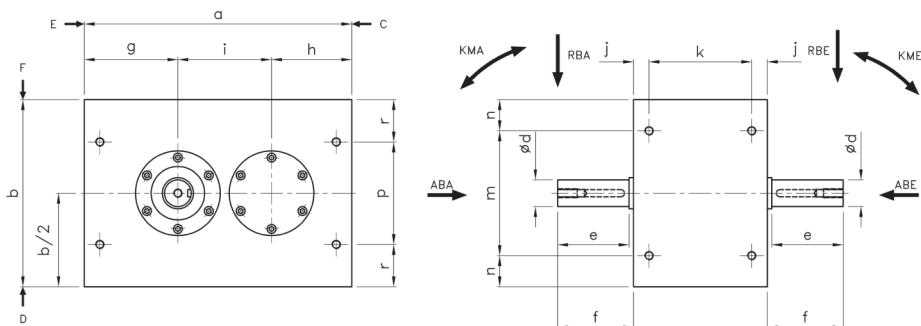
Index units with parallel shafts

PE 65-105

PE 65-105

Index units with parallel shafts

PE 65-105



- ① Positioning of the key *v* in the dwell phase (stop period)
- ② Positioning of the key *v* in the dwell phase (middle of the stop period)
- ③ Threaded holes **U**
- ④ 4 fastening holes **S** on all faces
- ⑤ 6 assembly stud holes on face **D**

Extra features on request

- Ⓐ Double input shaft
- Ⓑ Torque limiter at output

Dimensions without tolerances according to JS 13

1 year warranty on standard products.

Dimensions

Size	PE 45	PE 65	PE 80	PE 105	130
a	120	190	240	300	370
b	90	140	180	210	260
c	70	95	120	150	180
Ø d k6	14	19	28	30	42
e	30	40	60	80	110
f	31,5	43	65	85	115
g	40	70	90	105	130
h	35	55	70	90	110
i	45	65	80	105	130
j	7	7,5	12,5	17,5	18
k	56	80	95	115	144
l	106	175	215	265	334
m	54	95	120	140	180
n	18	22,5	30	35	40
p	43	80	95	115	144
r	23,5	30	42,5	47,5	58
S	M5 x 8	M6 x 12	M8 x 15	M10 x 20	M12 x 25
U	M5 x 16	M6 x 16	M10 x 25	M10 x 25	M16 x 35
v	5 x 5 x 25	6 x 6 x 35	8 x 7 x 55	8 x 7 x 75	12 x 8 x 100
Weight (kg)	~ 4,5	~ 15	~ 28,5	~ 49,5	104

Dimensions for reducers and motors: please contact us.

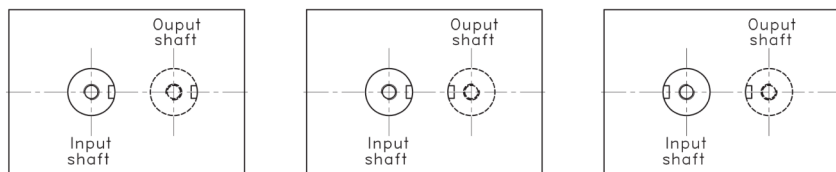
Remarks:

- This intermittent motion mechanism includes two coupled cams and a radial roller gear hub for the intermittent command of division plates, conveyors, etc.
- Vibrationless positive motion
- lifetime grease
- Possible supply of single parts (cams and turret)
- Available with gear reducer or motor gear reducer
- Please avoid the mounting of elastic elements on the input and output shafts
- The inversion of the input shaft rotation will also provide an inversion of output shaft rotation without changing the kinematical characteristics

Technical characteristics

Size	45	65	80	105	130
Max. allowable axial load input shaft ABE (daN)	3	16	37	55	80
Max. allowable radial load input shaft RBE (daN)	30	65	140	200	250
Max. allowable tilting torque input shaft KME (daNm)	1	2,6	8,4	16	27,5
Max. allowable axial load output shaft ABA (daN)	10	32	75	110	160
Max. allowable radial load output shaft RBA (daN)	30	65	140	200	250
Max. allowable tilting torque output shaft KMA (daNm)	1	2,6	8,4	16	27,5
Additional fixed torque Mf1 (daNm)	0,5	0,8	1	2	3

Key positioning function of number of stops



1, 2, 4 and 6 stops

3 stops

8 stops

Indexing unit Number of stops: 1 - 2 - 3 - 4 - 6 - 8	Oscillating unit Angle of oscillation: 15° - 20° - 30° - 45°
--	--